

How to embed YouTube video into PowerPoint

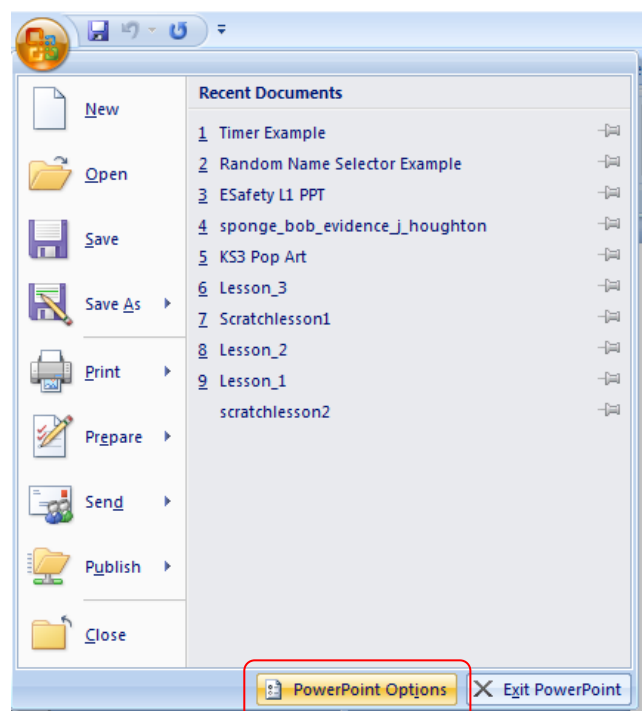
As a teacher, I often like to use YouTube video in my lessons. As the legality of downloading YouTube video is vague at best, the next best, and probably safest, thing is to embed the video into a PowerPoint presentation. This short tutorial explains how to easily embed YouTube video directly in to your PowerPoint Presentations. (Requires PowerPoint 2007 or above and an active internet connection)

Step 1

Before you start, you must enable the Developer Panel in PowerPoint.

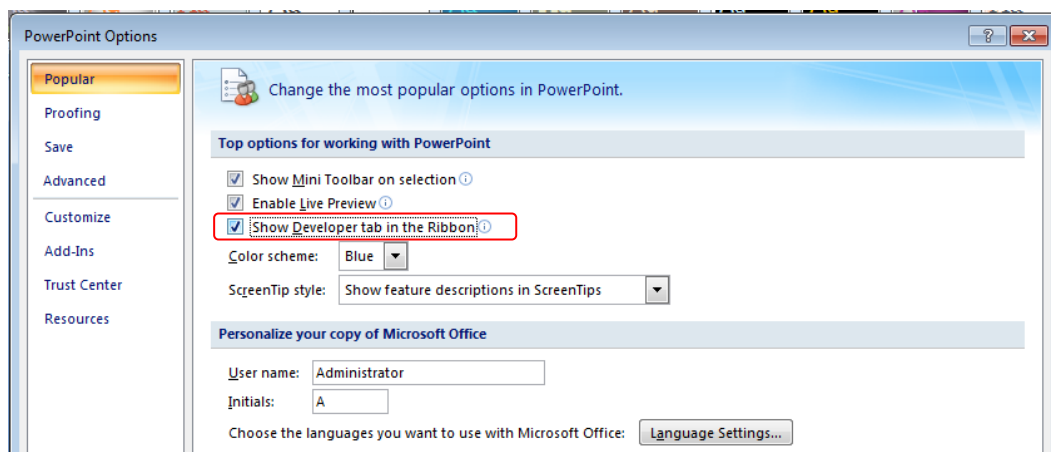
Office 2007 and above users:

1. Click on the “**Office Button**”



2. Click on “**PowerPoint Options**”

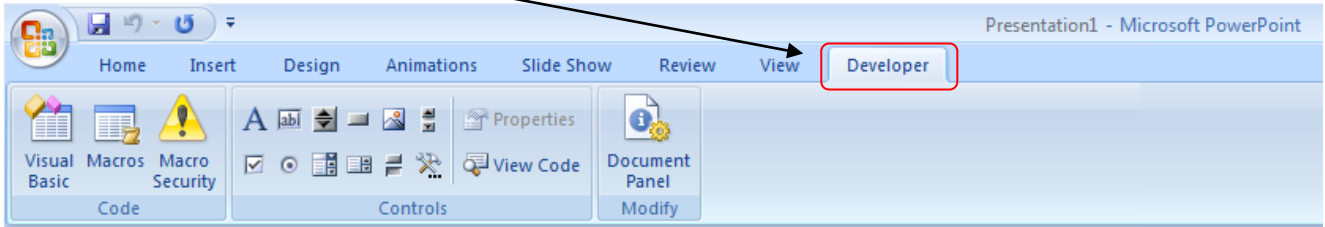
3. Under the “Popular tab”, tick “**Show Developer tab in the Ribbon**”



4. Click “OK”

Step 2

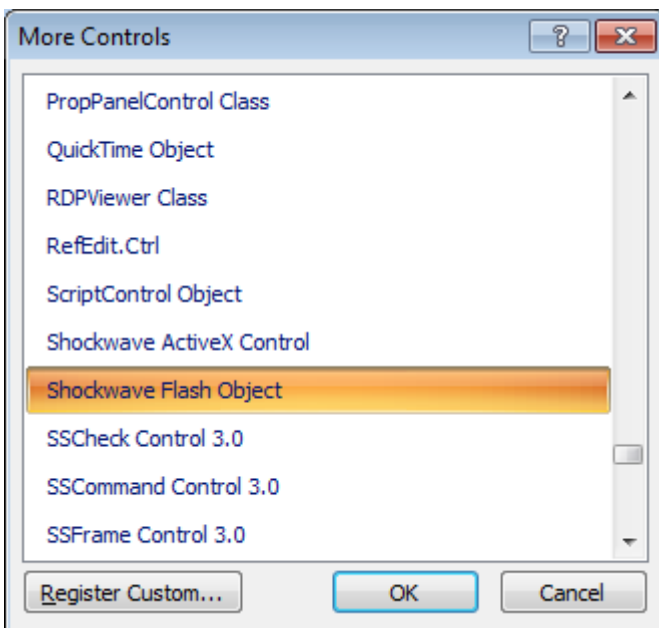
1. Click on the “**Developer tab**” from the ribbon (toolbar)



2. Click on the “More Controls” icon

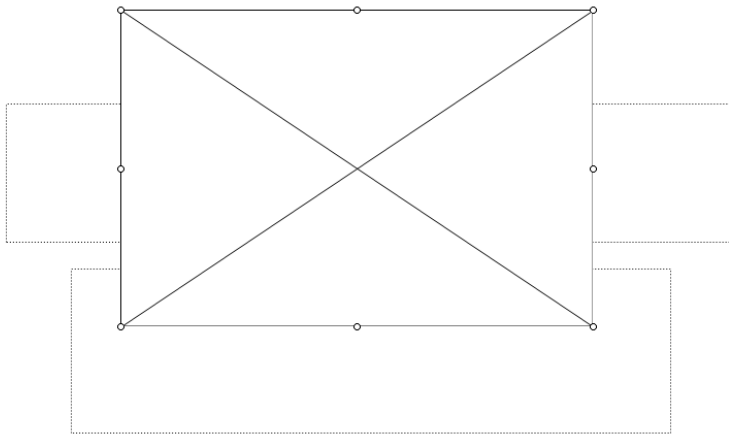


3. Scroll down and select “**Shockwave Flash Object**”

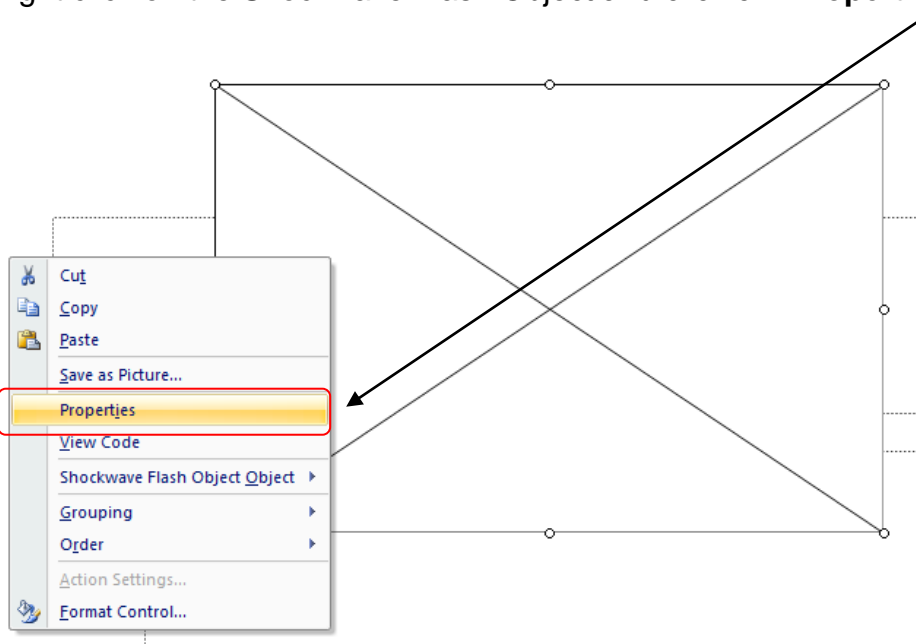


4. Click “OK”

5. Draw a box, roughly the size of your Flash component, inside your PowerPoint slide



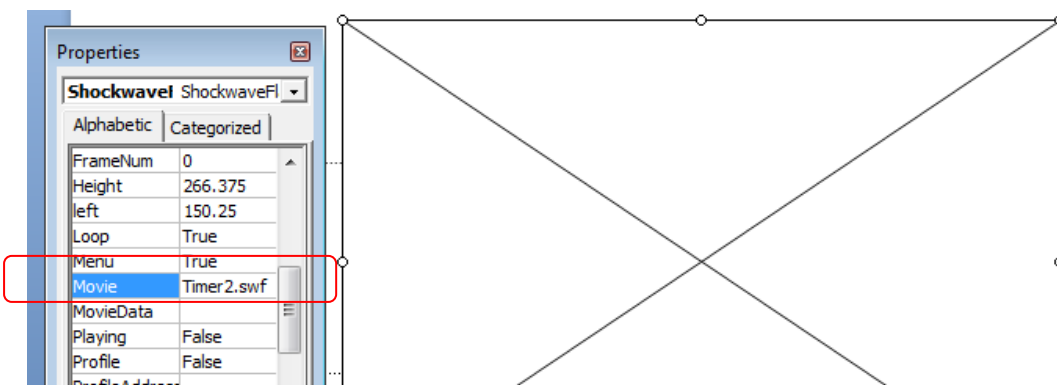
6. Right click on the Shockwave Flash Object and click on “Properties”



7. Go to YouTube and copy the URL of the video you wish to embed



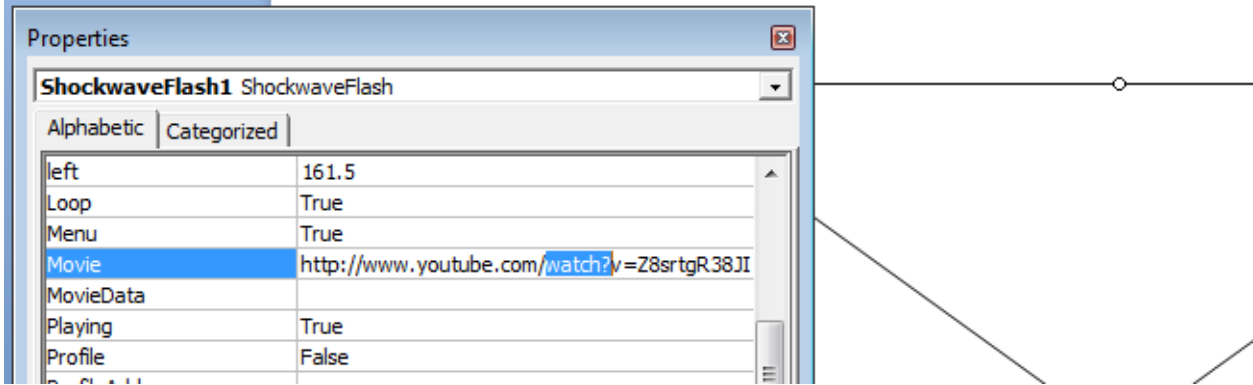
8. Scroll down to “Movie” and paste the full URL of the video you wish to embed



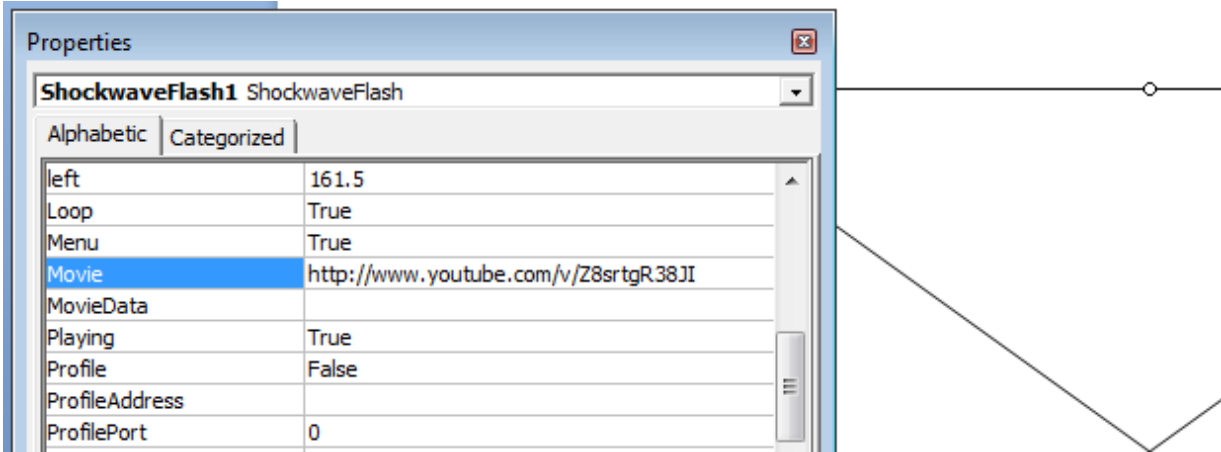
9. Highlight the section of the code entitled “Watch?” and delete this

10. Highlight the equals “=” sign and replace it with a slash “/”

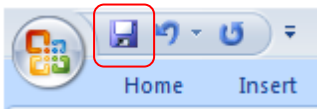
Before



After



11. Save your PowerPoint Presentation



12. Run your slide show

Note: You must be connected to the internet for this to work

More tutorials can be downloaded at: <http://wjec-ict.weebly.com/tutorials.html>

Thank you for downloading this tutorial